

Burrenbring Battery Energy Storage System (BESS) Factsheet

About Iberdrola Australia

Iberdrola Australia is an established developer, owner and operator of renewable energy and storage assets in Australia. Our portfolio includes 1.7 gigawatts (GW) of renewable energy generation with additional firming assets.

Over the past 20+ years, our team at Iberdrola Australia has been working with local communities and stakeholders to ensure our projects have positive long-lasting impacts. We work in partnership with landowners, neighbours, and local communities to ensure open dialogue, lasting relationships, and meaningful benefit sharing.

Project Overview

The proposed Burrenbring BESS project is located on privately owned land on Widi Country, within the Isaac Regional Council (IRC) region. It is located approximately 8 km north of the township of Nebo and 75 km south west of Mackay.

The Burrenbring BESS project comprises a BESS of up to 1000 MW and 2-4 hours storage capacity. The Burrenbring BESS project is currently preparing a Battery Development Application for IRC approval for material change of use. We anticipate this will be lodged later this year.

The proposed site adjoins a key Powerlink substation, with no additional land required for transmission infrastructure. The Burrenbring BESS project will provide necessary grid stability services for the Queensland grid and a reliable source of energy in peak and critical periods.

Iberdrola Australia is investigating a Wind Farm project at the same site. The Burrenbring BESS project and Wind Farm will be developed independently, under separate planning approval processes and timeframes. The investigations for the Wind Farm is at an earlier stage, and a separate consultation process will be implemented.



Up to 1000 MW
installed
capacity

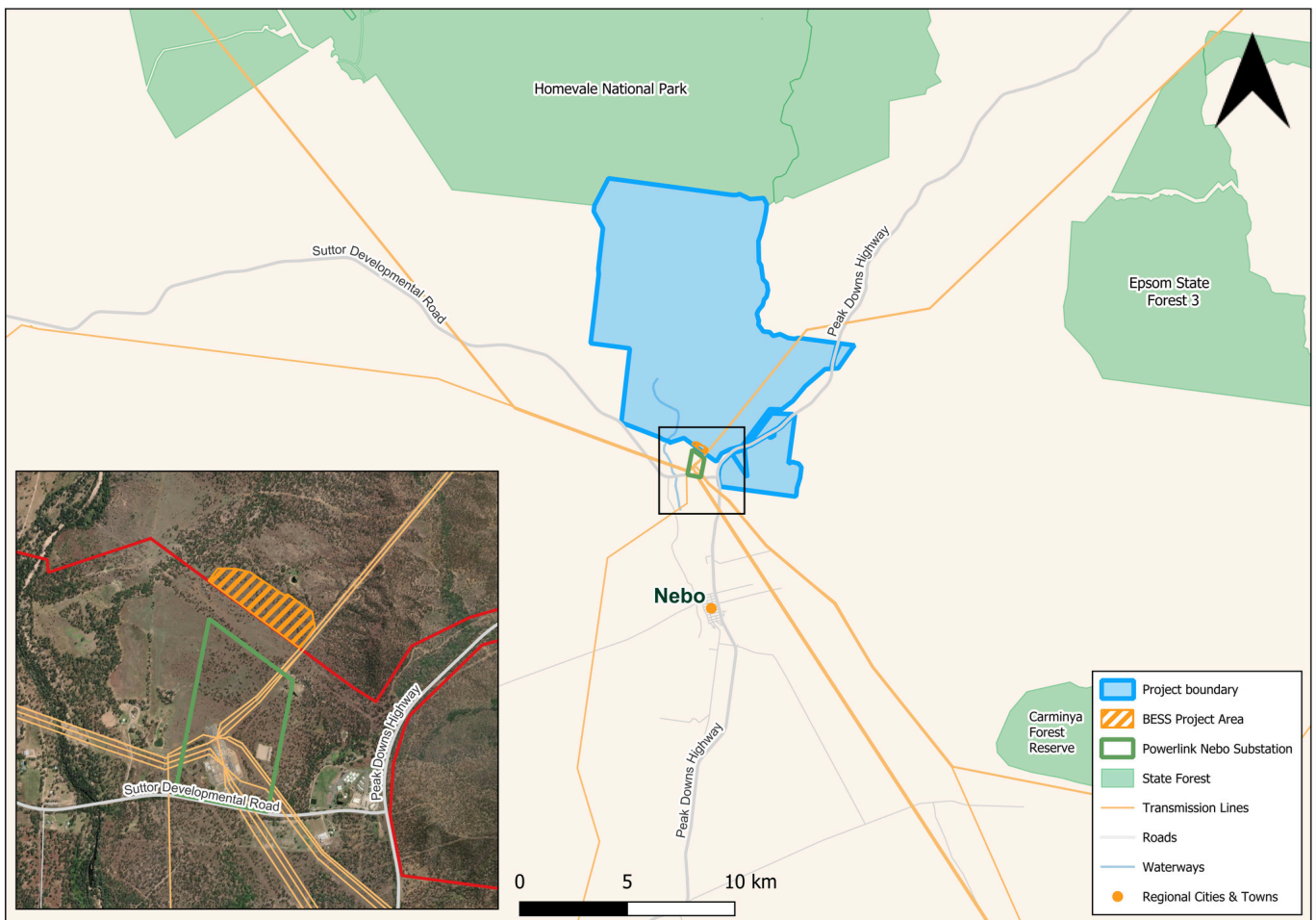


2 - 4 hours
capacity
duration



Grid connection
through Nebo
Substation

Project Map



Our Commitment to Our Communities

- Significant **economic investment** across the Isaac Regional Council region
- Use of **local materials, products and services** where possible (including transport, restaurants and accommodation)
- **Employment opportunities**
- **Sponsorship of local community** projects and initiatives
- Establishment of a **Community Benefit Fund**

Stay up-to-date

We'd love to keep you informed about project developments and upcoming community engagements, and invite you to sign up to our project mailing list by emailing the Project Team at burrenbringenergy@iberdrola.com.au



Why QLD?

As renewable energy capacity increases within Queensland, investment is needed to maintain the reliability of the system. This presents a unique challenge—and an opportunity.

Why Nebo?

The proposed location of the Burrenbring BESS sits at a key point in Queensland's power network, at a site adjoining a key Powerlink substation in Nebo, with no additional land required for transmission infrastructure.

Indicative Timeline

Ongoing Community & Stakeholder Engagement



Note: the Burrenbring Wind Farm will have a different development process that will be discussed in due course.

Next Steps

Investigations for the Burrenbring BESS project will involve preparing a Battery Development Application with IRC.

Iberdrola Australia will undertake a number of studies to assess the suitability of the Burrenbring BESS project. These initial activities will include:



Community & stakeholder consultation



Early environmental studies



Project design refinement with focus on minimising environmental, cultural heritage, and community impact



Technical studies to support the Development Application



Assess grid connection options



Seek relevant council, state and federal approvals

Contact Us

If you have any questions, feedback, local knowledge or suggestions, please reach out via the contact details below.



Visit our website:
www.iberdrola.com.au



Email the Project Team:
burrenbringenergy@iberdrola.com.au



Call the Project Team:
1800 917 372

Acknowledgement of Country

Iberdrola Australia acknowledges the Traditional Owners, the Widi People, and their continuing values, culture and connection to land, waters and sky. We pay our respects to Elders past and present.



Iberdrola
Australia