

# Mullion Creek Wind Farm Factsheet

## About the Proposed Project

Iberdrola Australia was awarded an Investigation Permit by Forestry Corporation of New South Wales (Forestry Corporation) in mid-2024 to investigate the feasibility of a wind farm within parts of the Mullions Range State Forest softwood pine plantation estate (Mullion Creek Wind Farm).

The proposed Mullion Creek Wind Farm (the proposed Project) would be located approximately 15 km north of Orange (NSW), on Wiradjuri Country and within Cabonne Shire Council and Dubbo Regional Council.

The proposed Project is being developed by Iberdrola Australia in close collaboration with Forestry Corporation. The current investigation phase is likely to take 4 - 6 years, if the Project is considered feasible.

### Work undertaken to date

We are in the early stages of the investigations phase. Since last year, Iberdrola Australia has:

- Engaged with local residents and stakeholders through various channels.
- Carried out preliminary studies including social, traffic, landscape and visual, noise, biodiversity, and Aboriginal cultural heritage and progressed the Scoping Report.
- Started measuring wind data to understand wind speeds, direction and other weather parameters by installing a meteorological mast and LiDAR device.
- Installed bird and bat microphones to support the biodiversity on site surveys and biodiversity assessment.
- Awarded the first round of community sponsorship funds to four local organisations and community groups.
- Established a Community Information Hub at 119 Byng Street, Orange.
- Undertaken preliminary grid studies to understand potential network constraints.
- Developed a preliminary wind turbine layout (subject to change as the project develops further) based on initial feedback and assessments undertaken.

## Preliminary Wind Farm Design

The indicative project features are listed below. The preliminary size and location of the potential wind turbines and related infrastructure is only indicative and not final. It is subject to change and refinement following further consultation and studies.



Up to 33 wind turbines



Up to 250 m tall turbines (tip height)



2 km setback from identified nearby dwellings and sensitive areas



Internal underground network connecting wind turbines to an on-site 33 kV / 330 kV substation



330 kV transmission line connecting the substation to a new 330 kV switching station



Permanent operation and maintenance facility with a local site manager and local technicians



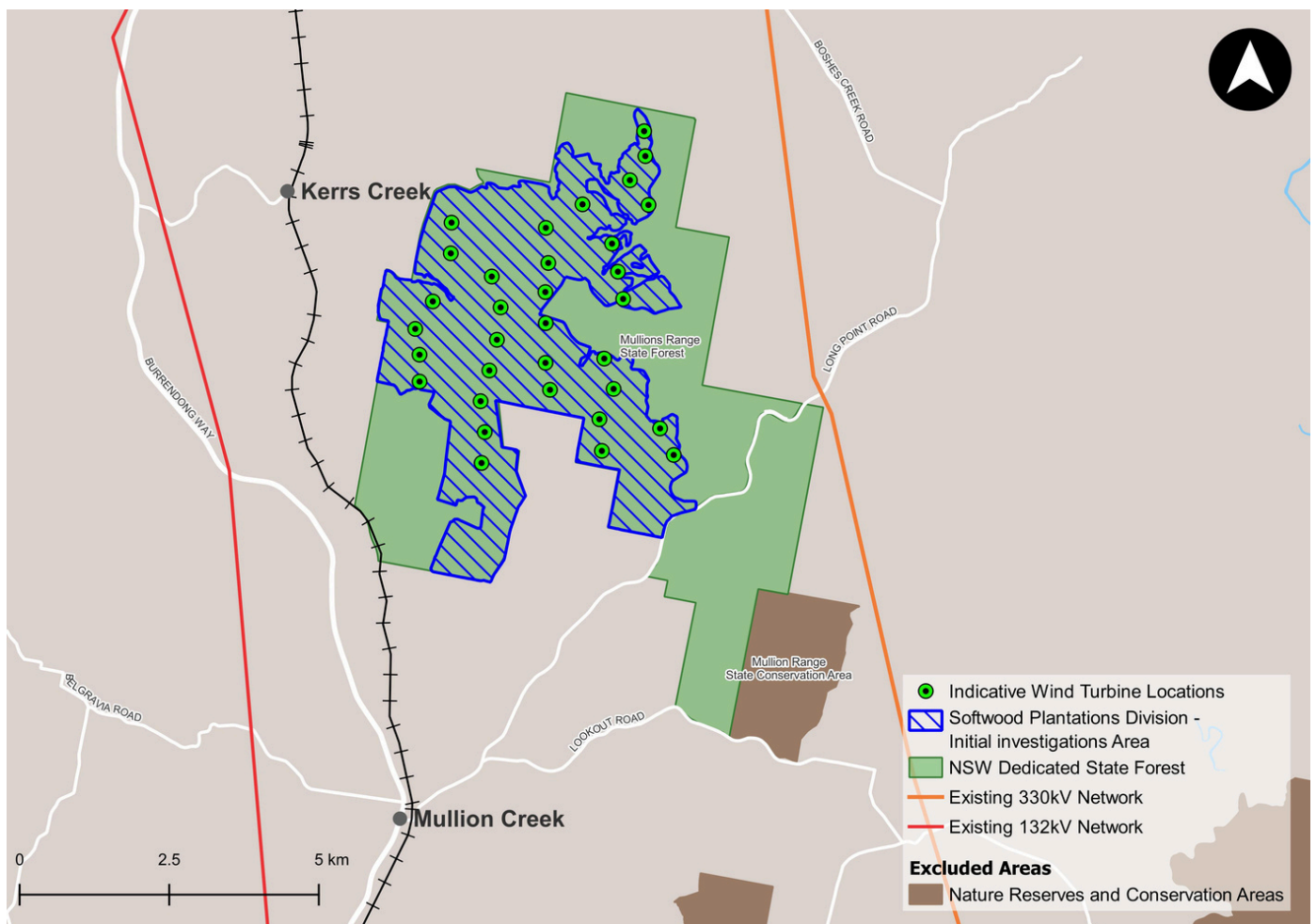
Temporary construction compounds and laydown areas



Power infrastructure connecting into the National Electricity Market (NEM)



Road network upgrades facilitating transport of components and shared benefits such as access to emergency services



## Design Changes to Date

The early design process has considered avoidance and minimisation strategies to optimise community use of the land and reduce environmental impact by:

- Utilising existing and already cleared access tracks within the softwood pine plantations to improve overall site access. This provides synergies with the plantation's productivity, management and with emergency services.
- Considering avoidance and minimisation of impacts to adjacent properties by providing a 2 km dwelling setback.
- Relocating wind turbines to avoid social and environmental constraints.

We will continue to work closely with you and technical specialists to keep refining the design.

## Indicative Timeline



## Next Steps

These are the activities that we are planning to undertake over the next 12 months:



Undertake second round of community engagement, drop-in sessions and stakeholder briefings.



Finalise Scoping Report for submission to the Department of Planning, Housing and Industry (DPHI) in the second half of 2025. This Scoping Report will be made public under the Major Projects website: <https://www.planningportal.nsw.gov.au/major-projects>.



Commence detailed specialist studies including biodiversity, cultural heritage, bushfire risk, noise, visual, social impact assessment, cumulative impact to feed into the Environmental Impact Statement (EIS) to be submitted to DPHI in late 2026.



Install an additional meteorological mast on site and repositioning the existing LiDAR device to understand the wind conditions across the site.



Ongoing ecological studies to identify key flora and fauna. A minimum of 2 years of seasonal flora and fauna studies and data is required for planning approvals. Iberdrola Australia is dedicated to preserving and enhancing the area's natural ecosystem and unique character, while also fostering local job creation and supporting long-term community benefits.



Optimise the design based on avoidance and minimisation strategies in consultation with the community and key stakeholders.

## TrueView Requests

We have an iPad-based augmented reality software to show you what the proposed Project will approximately look like from your property.

If you are interested, please contact the Project Team on **0448 293 899** or [mullioncreekwindfarm@iberdrola.com.au](mailto:mullioncreekwindfarm@iberdrola.com.au) to arrange a time to meet.



BLACK MOUNTAIN RD →

## Community Benefits

Iberdrola Australia seeks to act as a good neighbour, establish long-term relationships, and become an integral member of the local communities in which we operate.

Iberdrola Australia is committed to establishing the following through continued neighbour and community consultation and feedback:

- Community Benefit Fund
- Environment Benefit Fund
- Community Sponsorship and Grants (applications for the first round of early community sponsorships and grants were awarded in April this year)

We have established a Community Information Hub at 119 Byng St, Orange:

- The hub is open Tuesdays (9am-1pm) and Thursdays (1pm-5pm)
- The hub welcomes neighbours and community members to access information about the Project, ask questions and voice feedback to members of our Project team
- We invite you to stop by and chat to our Local Community Officer. Should you wish to visit us or for us to visit you at a time that suits you, please email us at [mullioncreekwindfarm@iberdrola.com.au](mailto:mullioncreekwindfarm@iberdrola.com.au) or call us on **0448 293 899** to arrange a meeting

## Community Sponsorship Fund

Applications for the first round of early community sponsorships closed in February 2025. Grant amounts of \$5,000 and \$10,000 were available for local groups, clubs, schools and organisations located near the project site.

We received 13 applications. Following a rigorous assessment process, we have awarded grants to:

- **Mullion Creek Rural Fire Service** to replace the shed apron at headquarters
- **North West Orange Rural Fire Service** to re-place and repair radios
- **March Rural Fire Service** for satellite internet services to help with communication and training services
- **Mullion Creek & District Progress Association** for a pump bike track and a bike/walking trail on the Mullion Creek Hall grounds.

## Contact Us

If you have any questions, feedback, local knowledge or suggestions, please reach out to the Project Team via the contact details below.



Visit our website:  
[www.iberdrola.com.au](http://www.iberdrola.com.au)



Email the Project Team:  
[mullioncreekwindfarm@iberdrola.com.au](mailto:mullioncreekwindfarm@iberdrola.com.au)



Call the Project Team:  
0448 293 899 or 1800 917 372



Visit the Community Information Hub:  
119 Byng St, Orange  
Tuesdays (9am-1pm) and Thursdays (1pm-5pm)

## Acknowledgement of Country

Iberdrola Australia acknowledges the Traditional Owners, the Wiradjuri People, and their continuing values, culture and connection to land, waters and sky. We pay our respects to Elders past and present.



Iberdrola  
Australia