

Pylara Wind Farm Factsheet

About Iberdrola Australia

Iberdrola Australia is a long term developer, owner, and operator of renewable energy and firming assets in Australia. Our portfolio includes 21 renewable energy and firming assets totalling more than 2.7 GW of operating capacity.

Over the past 20 years, our team at Iberdrola Australia has been working with local communities across Australia and local stakeholders to ensure our projects have positive long-lasting benefits. We are committed to meaningful, ongoing and positive consultation with our host landowners, neighbours and local communities to build long-term trust and benefit sharing.

Project Overview



Iberdrola Australia is commencing early-stage feasibility investigations into the potential expansion of wind generation at the Woodlawn Eco-Precinct site. These investigations are being undertaken under the project name Pylara Wind Farm.



The investigation area is located about 6 kilometres west of Tarago in NSW, within Pejar Local Aboriginal Land Council area, and within Goulburn Mulwaree Council and Queanbeyan-Palerang Regional Council areas.



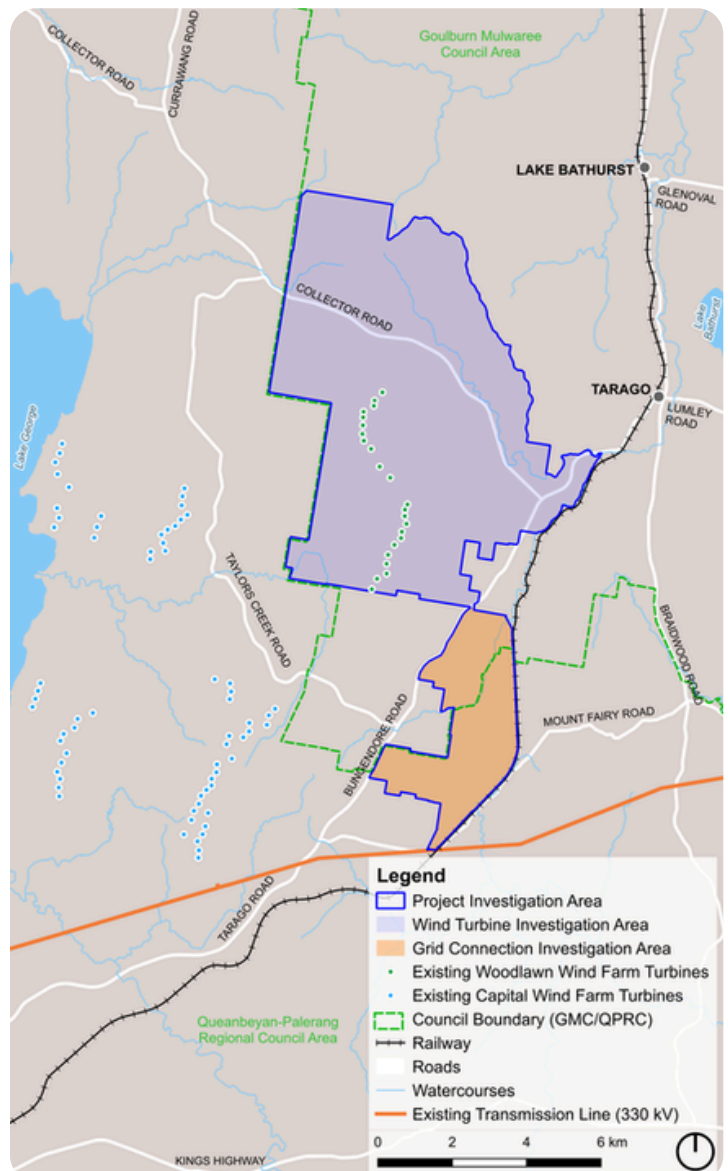
Feasibility investigations will take place this year. The proposed number of wind turbines and inclusion of battery will be considered during our feasibility investigations.



If considered viable, the development phase of the project is expected to take around 4 to 6 years, prior to construction.



Iberdrola Australia has an existing presence in and around the Woodlawn Eco-Precinct and owns and operates the Woodlawn Wind Farm and Capital Wind Farm.



Pylara Wind Farm, indicative project investigation area

Indicative Project Timeline

Ongoing Community & Stakeholder Engagement

Project Feasibility & Initial Community Engagement



- Undertaking initial technical studies and investigations at the proposed site
- A focus on community engagement, with a series of one-on-one meetings, briefings and public information drop-in sessions

We are here

Scoping Report Submission



- Preliminary social, environmental and technical studies
- Department issues project specific Secretary's Environmental Assessment Requirements (SEARs)

Environmental Impact Assessment (EIS) & Detailed Studies



- Refinement of plans and preparation of assessments and studies
- Lodgement of Development Application (DA) to the NSW Department of Planning, Housing and Infrastructure (DPHI) supported by the EIS including a Social Impact Assessment

Public Exhibition & Response to Submissions



- Iberdrola Australia's DA is displayed for formal public feedback
- Preparation of a submissions report that explains how submissions have been addressed in the DA process

Development Approval Determination



- DPHI assesses the project
- Consent authority decides whether to grant (including conditions of consent) or refuse consent
- Determination of the DA will be communicated

Pre-construction (contracting and procurement)



- Social procurement and engaging local suppliers
- Negotiating construction and equipment supply contracts

Construction & Commissioning



- If approved, construction takes place and the project is commissioned

Wind Farm Operations



- Iberdrola Australia operates the wind farm

Wind Farm Decommissioning & Potential Repowering



Next Steps

Iberdrola Australia will undertake a number of early-stage studies throughout 2026 to assess the feasibility of the potential wind farm project. Initial activities will include:



First Nations, local community and stakeholder consultation



Preliminary environmental, social and technical assessments



Wind monitoring through the installation of a lidar and a meteorological mast



Early preliminary design in consultation with the community based on avoidance and minimisation strategies



Preliminary grid assessment studies



Launching our first round of community grants

Iberdrola Australia will incorporate feedback from the local community and gather ideas on how the project could be refined to minimise potential impacts on the local community, and to unlock social, environmental and economic opportunities.

COMMUNITY GRANTS

If the Project progresses, Iberdrola Australia would establish a Community Sponsorship Fund for the life of the project.

Local groups, clubs, schools and community organisations are invited to apply for grants of up to \$10,000 to support initiatives that make a positive difference in the community.

For more information, visit our website:

www.iberdrola.com.au/community-funds-and-sponsorships

Contact Us

To get in touch, please reach out via the contact details below.



Visit our website:

www.iberdrola.com.au



Email the Project Team:

pylarawindfarm@iberdrola.com.au



Call the Project Team:

1800 917 372 (24/7 free within Australia)

Acknowledgement of Country

Iberdrola Australia acknowledges the Traditional Owners throughout Australia and their continuing values, culture and connection to land, waters and sky. We pay our respects to Elders past and present.