




# Reddestone Wind Farm Factsheet

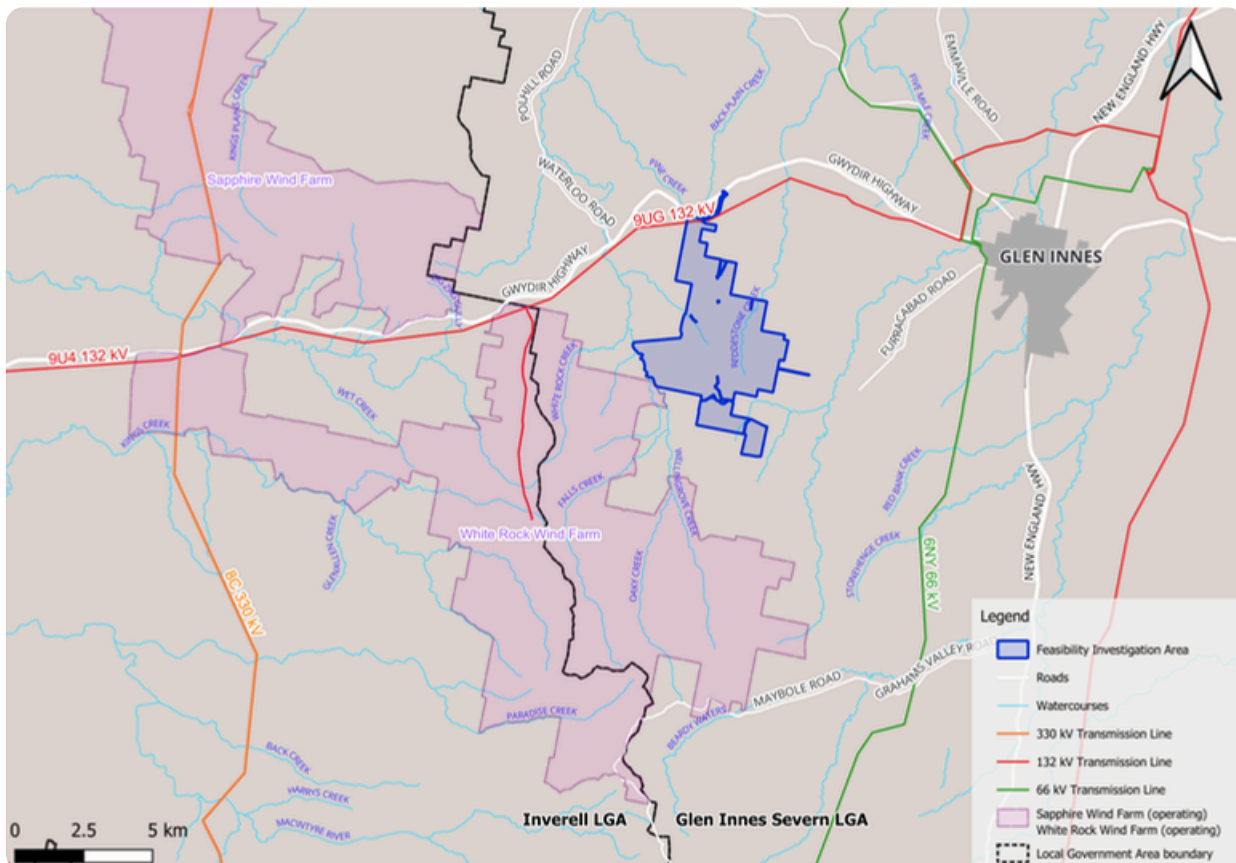
## About Iberdrola Australia

Iberdrola Australia is a long term developer, owner, and operator of renewable energy and firming assets in Australia. Our portfolio includes 21 renewable energy and firming assets totalling more than 2.7 GW of operating capacity.

Over the past 20 years, our team at Iberdrola Australia has been working with local communities across Australia to ensure our projects have positive long-lasting benefits. We are committed to meaningful, ongoing and positive consultation with our host landowners, neighbours and local communities to build long-term trust and benefit sharing.

## Project Overview

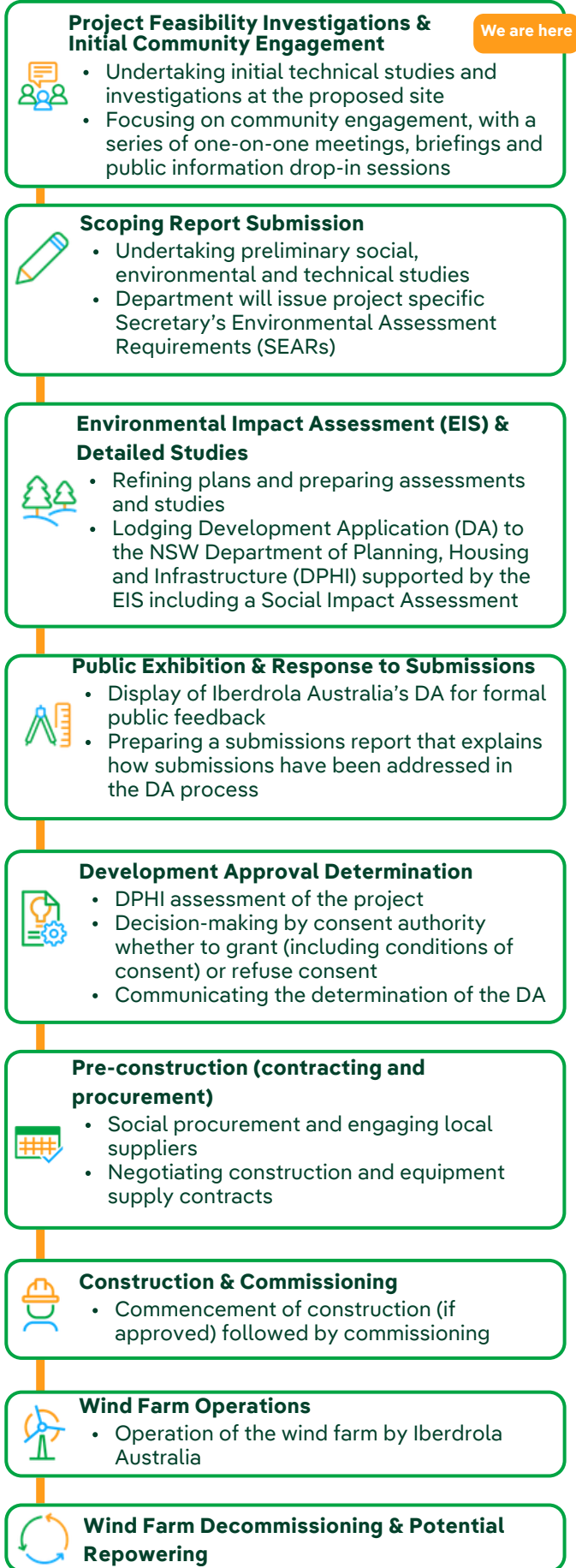
-  Iberdrola Australia is commencing early-stage feasibility investigations into a potential wind farm located approximately 10 km west of Glen Innes. These investigations are being undertaken under the project name Reddestone Wind Farm, named after Reddestone Creek that runs through the project area.
-  The investigation area consists of approximately 1900 ha of land, on Ngarabal Country, within the Glen Innes Severn and Inverell local government areas (LGAs).
-  The investigation area is located on the same land that was previously investigated for the Glen Innes Wind Farm project by a different developer.



Reddestone Wind Farm investigation area

## Indicative Project Timeline

Ongoing Community & Stakeholder Engagement



## Next Steps

Iberdrola Australia will undertake a number of early-stage studies throughout 2026 to assess the feasibility of the potential wind farm project. Initial activities will include:



**First Nations, local community and stakeholder consultation**



**Preliminary environmental, social and technical assessments**



**Wind monitoring through the installation of a lidar and a meteorological mast**



**Early preliminary design in consultation with the community based on avoidance and minimisation strategies**



**Preliminary grid assessment studies**



**Launching our first round of community grants**

Iberdrola Australia will incorporate feedback from the local community and gather ideas on how the project could be refined to minimise potential impacts on the local community, and to unlock social, environmental and economic opportunities.



## Our Commitment

Iberdrola Australia is committed to working closely with First Nations groups, the local community, and key stakeholders to ensure the Project delivers positive, long-lasting meaningful community investment that strengthens local connections, enhances infrastructure and supports education and biodiversity.

We are committed to:

- Significant **economic investment** across the region
- Use of **local materials, products and services** from locally based suppliers where possible, including retail, transport and hospitality
- Employment opportunities during development, construction and operation
- Sponsorship of **First Nations** and other **local community initiatives**
- Establishment of a **Community Benefit Fund for the life of the project**
- Local **biodiversity enhancement** initiatives
- Providing a **diversified income** for host landowners and neighbours



## COMMUNITY GRANTS

Iberdrola Australia and the host landowners will establish a Community Sponsorship Fund for the life of the project.

Local groups, clubs, schools and community organisations are invited to apply for **grants** of up to **\$10,000** to support initiatives that make a positive difference in the community.

For more information, visit our website:  
[www.iberdrola.com.au/community-funds-and-sponsorships](http://www.iberdrola.com.au/community-funds-and-sponsorships)

## Contact Us

If you have suggestions for how we can contribute to the community, feedback on the project or local knowledge to share, please reach out via the contact details below.



Visit our website:  
[www.iberdrola.com.au](http://www.iberdrola.com.au)



Email the project team:  
[reddestonewindfarm@iberdrola.com.au](mailto:reddestonewindfarm@iberdrola.com.au)



Call the project team:  
 1800 917 372 (24/7 free within Australia)

## Acknowledgement of Country

Iberdrola Australia acknowledges the Traditional Owners of Country and their continuing values, culture and connection to land, waters and sky. We pay our respects to the Elders past and present.



Iberdrola  
Australia