

Smithfield Battery Energy Storage System

Iberdrola Australia has commenced construction of the Smithfield Battery Energy Storage System (BESS) in Smithfield, approximately 30km from Sydney CBD.

With an installed capacity of 65 megawatts (MW), the Smithfield BESS will generate enough electricity to power 20,000 homes during peak demand

The Smithfield BESS has been approved as a State Significant Development (SSD) by the New South Wales Department of Planning and Environment.

Iberdrola Australia

Iberdrola Australia has 20 years of experience in the renewable energy industry, operating 1.5 gigawatts (GW) of renewable projects. Our vision is to accelerate the take-up of clean energy in Australia by increasing investment to support Australia's energy transition. We develop, construct, own and operate our projects responsibly with a focus on community and sustainability outcomes and we are committed to being the lead green energy supplier for Australian businesses.

Iberdrola Australia is part of the Iberdrola Group, operating globally and recognised as sustainability leaders.

Project overview

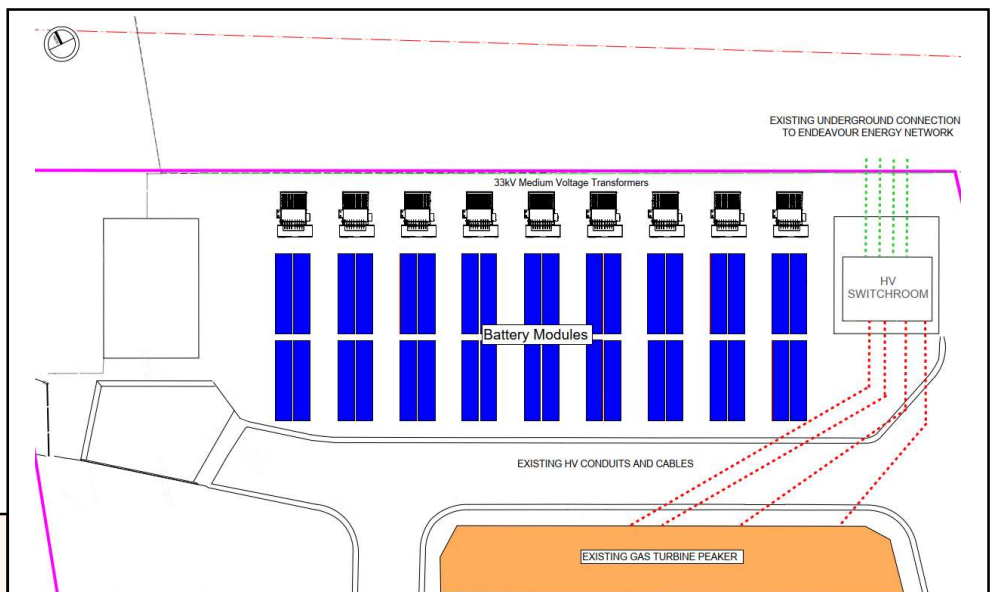
The Smithfield Battery Energy Storage System (BESS) is a 65MW / 130 MWh battery which has the capacity to power 20,000 homes during peak demand.

Located in the Smithfield industrial area off the Cumberland Highway, 30km from Sydney CBD, the new BESS is co-located with the Smithfield Open Cycle Gas Turbine Peaker.

The BESS comprises of 36 battery & inverter units, 9 Australian made medium voltage transformers, replacement and upgraded electrical systems, and an upgrade of the existing 33 kV connection to Endeavour Energy infrastructure.

Construction and operation of the Smithfield BESS is expected by December 2025.

Smithfield BESS Layout



BESS

Installed capacity of up to **65 MW / 130 MWh**

Construction

60+ construction jobs

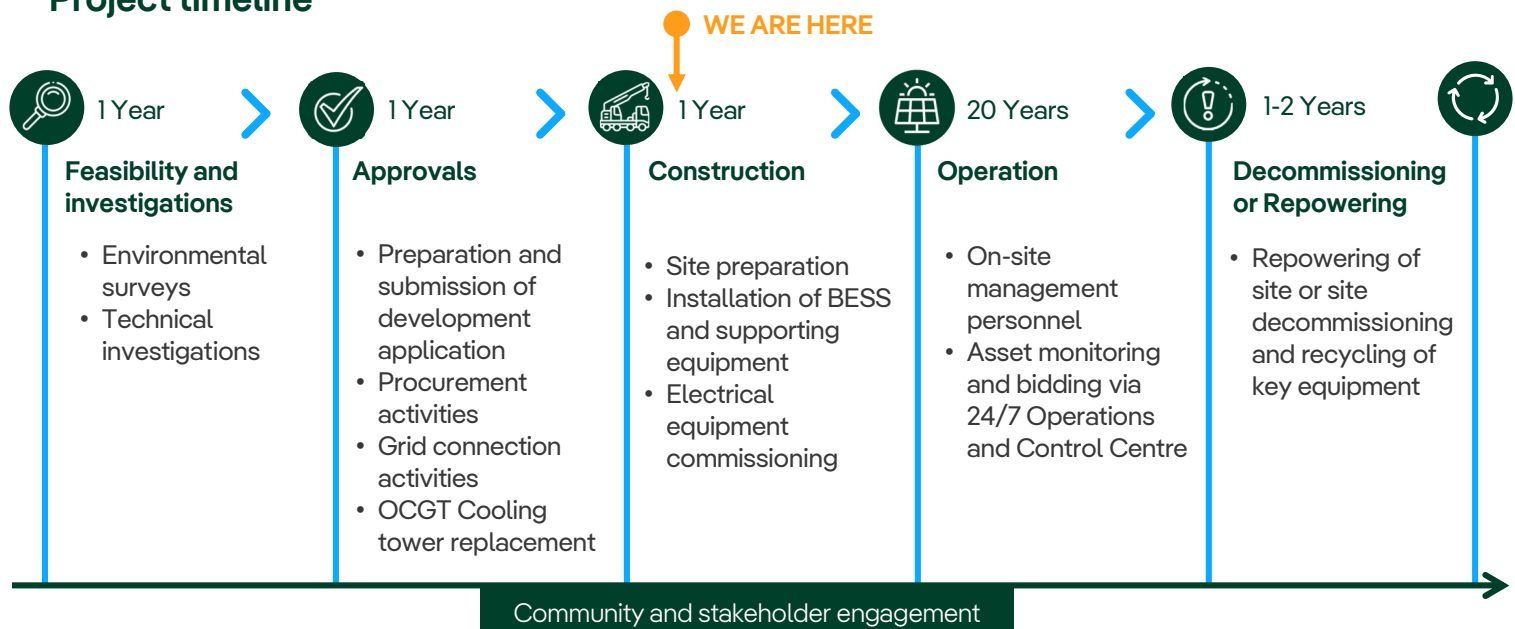
Purpose

Firming of Renewable Energy, Network support & ancillary services

Energy

Powering up to **20,000** homes

Project timeline



Community benefits

Iberdrola Australia is committed to working with local communities and stakeholders to ensure our projects have positive long-lasting impacts. We seek to act as a good neighbour, establish a long-term relationship, and become an integral member of the local communities within which we operate. We look for opportunities to share the benefits of our projects with the local community.

Iberdrola is currently seeking community input for the community benefits fund. Feedback can be provided at enquires@iberdrola.com.au.



The Smithfield BESS project will deliver the following local benefits:

- ✓ Ph.D. research positions in renewable energy.
- ✓ University placements for applicants of indigenous heritage or from an under-represented group.
- ✓ Habitat restoration and environmental programs.
- ✓ Graduate and apprenticeship programs.
- ✓ Decarbonisation initiatives.

Find out more

- Visit our website: www.iberdrola.com.au/our-assets/development-assets/smithfield-bess
- Follow us on LinkedIn: www.linkedin.com/company/iberdrola-au/

Comments and Feedback

We would like to hear from you! Please contact us with your questions, comments and feedback.

✉ Email us: enquires@iberdrola.com.au

☎ Call us on **1800 917 372** (24 hours, free within Australia)